

2.8 WURDI YOUANG (YOU YANGS)

Significant Landscape

Character Type 2 The Uplands

Character Area 2.7 You Yang

The Wathaurong Aboriginal people called the granitic rises commonly known as the You Yangs, Wurdi Youang, meaning big mountain in the middle of the plain. These hills are part of the southern reaches of the Great Dividing Range, and can be seen clearly from Geelong and sometimes as far away as the Mornington Peninsula across Port Phillip Bay.

Notable viewing locations within this landscape include:

- Flinders Peak Lookout
- Big Rock Lookout

Major viewing corridors:

- Little River - Ripley Road
- Ripley Road
- You Yangs Road
- Branch Road
- Sandy Creek Road
- Geelong - Melbourne Railway Line
- Princes Highway (Though not visible on the map opposite, the You Yangs are a clear feature along the Princes Highway between Melbourne and Geelong)

Overall Significance Rating: State

A detailed significance assessment is provided over the following pages.



You Yangs in Fog (elizt.atport: Flickr)

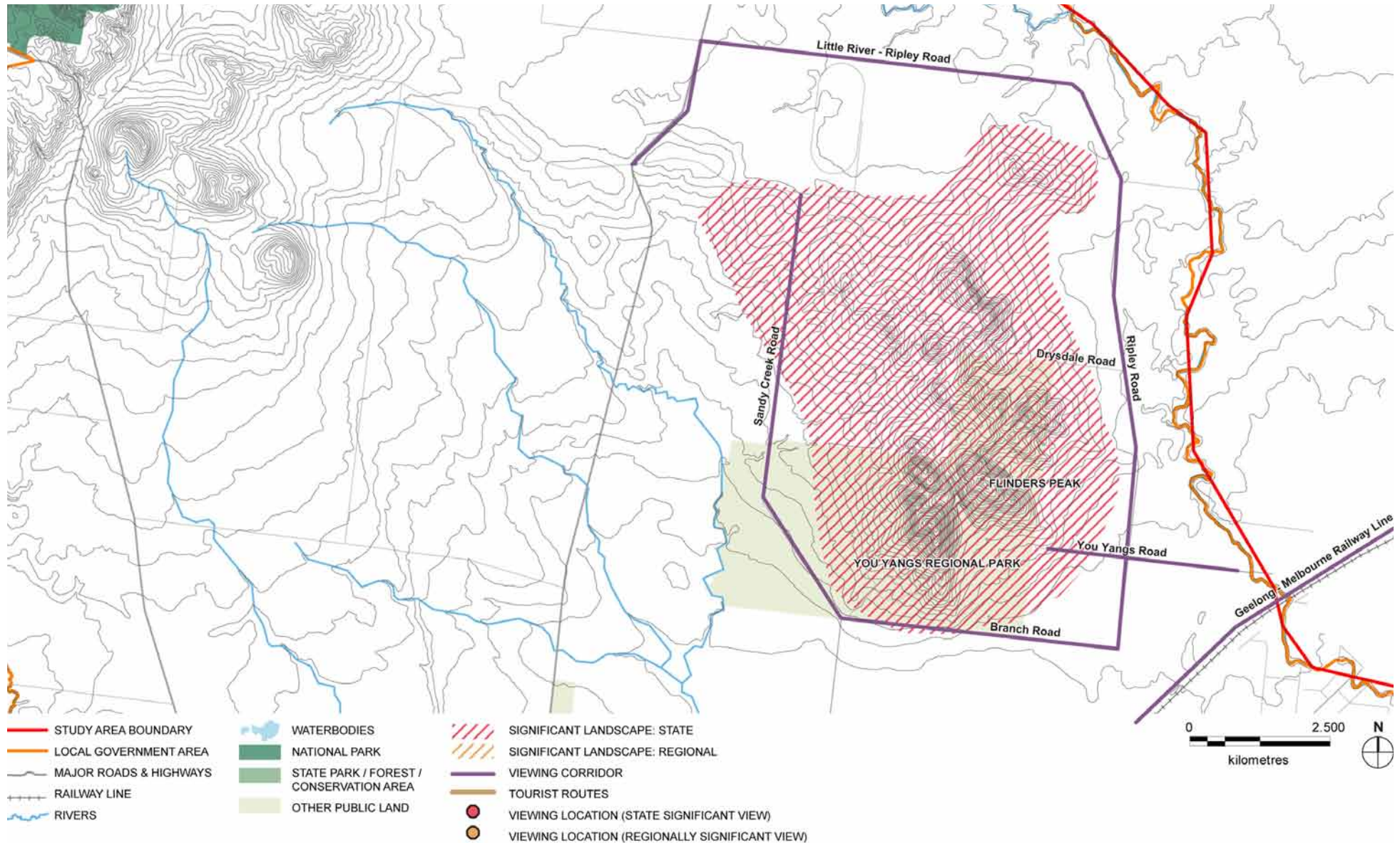


Aboriginal water wells in the granite rocks



Granite rocks

Landscape Significance Map



Aesthetic Values

AESTHETIC VALUES				
	Source	Description	Aesthetic Values Rating Considerations (i.e. exemplary, iconic, scarce)	Level of Significance
LANDSCAPE FEATURES	Survey	The Wurdi Youang are a series of granite ranges that rise from the Werribee Plain between Melbourne and Geelong. Most of the rises are included in the You Yangs Regional Park. Flinders Peak is the highest point in the park, with an elevation of around 350 metres. From here views are available across the Brisbane Ranges, Geelong and Corio Bay, to Melbourne and as far away as Mount Macedon.	The rise and formation of the You Yangs are a distinctive and memorable feature of the journey between Melbourne and Geelong.	High (Regional)
EDGES OR CONTRASTS	Survey	There is a sharp contrast between the uplift of the hills and the surrounding, flat landscape. The vegetated setting of these contrasts with the cleared, agricultural land of the surrounding plain, making it a bold focal point.	The steep slopes and bloated, granitic outcrops are an exemplary example of the uplands that protrude on the northern and eastern edges of the Volcanic Plains.	High (Regional)
COMPOSITION	Survey	<p>The sharp, triangular peaks of the You Yangs are a distinctive landscape feature that dominates the horizon from a number of viewing angles. Up close, weathered granite outcrops and tors on the faces of the hill slopes create intricate detail, and impressive sculptural forms. These often feature in the foreground and middle ground of views, with the dramatic backdrop of the ranges in the distance. The landscape surrounding the You Yangs often contains rough, textured surfaces of stony rises and lava flows that originated from volcanic activity at the nearby Anakie Hills.</p> <p>Australian landscape artist Fred Williams drew inspiration from the landscape surrounding the You Yangs, and the distinctive shape on the horizon and sculptural granitic tors are popular settings and subjects for landscape photographers.</p>	The You Yangs are an iconic landscape feature that is recognisable not just to residents of Geelong and the surrounding region, but to those who can see the hills on the distant horizon from the eastern edge of Port Phillip Bay.	Exceptional (State)
OVERALL AESTHETIC SIGNIFICANCE RATING				State

Other Cultural Landscape Values

HISTORIC SIGNIFICANCE	
Source	Description
Desktop Research	Aboriginal artefact scatters, earth mounds, scarred trees and granitic rock wells occur throughout the area.
Museum Victoria	The Wurdi Youang were used as a navigation beacon by Matthew Flinders, the first European explorer in the area.
Parks Victoria	The park includes remains of gravel pits and plantations which reflect how European settlers used the area as a source of gravel and timber.
National Galley of Australia	Australian landscape painter Fred Williams drew inspiration from this landscape in his <i>You Yangs</i> series of 1962-64.
SIGNIFICANCE RATING	State

ENVIRONMENTAL / SCIENTIFIC SIGNIFICANCE	
Source	Description
Desktop Research	Mt. Rothwell Biodiversity Interpretation Centre on the northern edges of the You Yangs Regional Park has been established for the protection of flora and fauna species with high conservation value.
Park Victoria	The park has high conservation values as an island of habitat for flora and fauna species that are otherwise surrounded by exotic pastures and grazing land. The Brittle Greenhood and Growling Grass Frogs which are both listed as threatened under the Flora and Fauna Guarantee Act 1988 are found in the park.
SIGNIFICANCE RATING	Regional

SOCIAL SIGNIFICANCE	
Source	Description
Aboriginal Affairs Victoria	Wurdi Youang is the traditional country of the Wathaurong people to whom it holds social, cultural and spiritual significance. The waterbodies, distinctive natural features and places of ecological value within this area are likely to have high Aboriginal cultural heritage sensitivity.
Parks Victoria	The You Yangs Regional Park has high recreational values and offers a range of outdoor activities such as mountain bike riding, bird watching, rock climbing and bushwalking, all with magnificent views of the surrounding plains.
Survey	The Wurdi Youang are a well known landmark within the region, and at the gateway to Geelong.
Parks Victoria	<i>Bunjil</i> (2006) is a large stone geoglyph created by Andrew Rogers to commemorate the Melbourne 2006 Commonwealth Games. The geoglyph depicts Bunjil, a wedged-tailed eagle who was the Creator Spirit of the Wathaurong Aboriginal people.
SIGNIFICANCE RATING	Regional

OTHER SIGNIFICANCE	
Source	Description
Desktop Research	The scenic and recreational attributes of the Wurdi Youang are important visitor attractions for the area which contributes to the local economy.
SIGNIFICANCE RATING	Regional