

F.N. 4929

AGE
AUG 20/6/92

Machinery & Furniture Auctions

Burnham Beeches fittings auction

By JOHN WESTWOOD

MASON GRAY STRANGE will auction fittings and plant at Burnham Beeches Country House, Sherbrooke, on Tuesday 23 and Wednesday 24 June.

The property is undergoing a \$12 million refurbishment and refit, and will be closed until completion. The work is expected to take six to nine months.

Burnham Beeches was built by Aspro magnate Alfred Nicholas in the late 1920s as his family home. Today, the house and garden is a popular venue for seminars and for weekend accommodation.

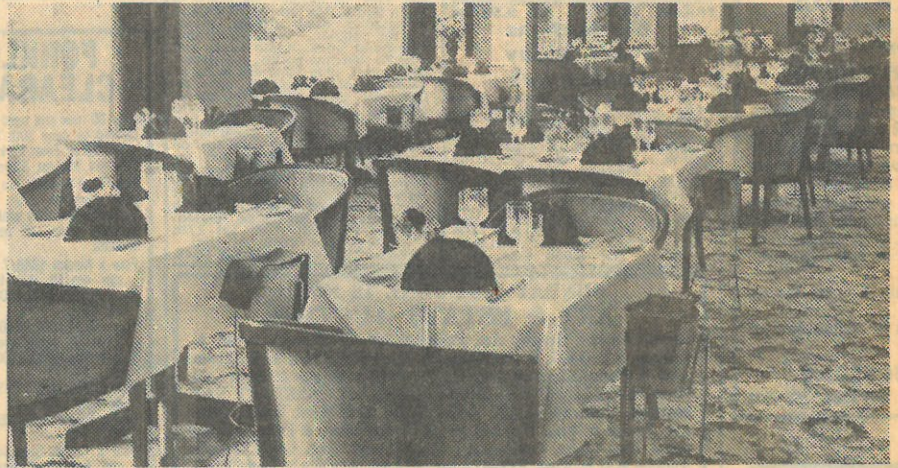
Virtually the entire interior and all outbuildings are being refurbished, and there will be additions to the outdoor recreational facilities, said managing director Mr Michael Wilson.

Alfred Nicholas died in 1937, four years after his dream home, on landscaped acreage in the Dandenongs, was completed. In 1941 the house and grounds was loaned to become a children's hospital, and after the war it was returned to the Nicholas family.

From 1955 it was operated by the Nicholas Institute as a research facility and remained so until it was sold at auction in 1981. Since then, Burnham Beeches has been run as a weekend retreat and conference centre.

Next week's auction starts at 10 am each day, on the premises (Melway reference 75 F1).

Items to be auctioned include the contents of the 50 hotel rooms — bedroom suites, bed linen and blankets, bathroom fit-



Burnham Beeches . . . auction of contents starts on Tuesday.

tings, television sets, refrigerators, air conditioners, side and occasional tables, light fittings, prints, clock radios, chairs, curtains, even doors and wardrobes.

From the main dining room and guests' lounge, buyers can bid for Royal Doulton crockery, trestles, trolleys, tub chairs, stainless steel cutlery, glassware, and the carpet.

Also being offered are a stereo sound system, a boardroom table, modern dining chairs, an electronic cash register and an NEC telephone system.

Kitchen equipment to be sold includes five cooking ranges, two 6-door refrigerators, a stainless steel dishwasher, bain marie and hot press, a fan-forced convection oven, stainless steel food

preparation benches, a commercial microwave oven, a deep fryer, and a meat slicer.

Outside, a pool sand filter system will be auctioned, as will imitation palms, and a cedar-lined sauna. Plant and equipment for sale includes two diesel generators, a gas-fired boiler and ductwork, two other boilers, and nine floodlights.

Burnham Beeches Country House auction of fittings, 23 and 24 June; contact Mason Gray Strange (Simon Derham 329 9911). Viewing on Monday 22 June between 9 am and 4 pm.

● ESTATE Clearance Centre's special auction tomorrow of ancient artifacts and primitive art will include Aboriginal watercolours by Albert Namatjira.

The auction, at noon, is at the firm's rooms, 966 High Street, Armadale.

There also is a rare bark shelter painted by Bobby Ngamijra, dot paintings by Dinny Nolan, Peggy Nunjgala, Rene Robinson, plus bark and rock paintings by Djawida and members of the Ngamijra family.

Most of the Aboriginal artists represented in the auction have works displayed in national art galleries throughout Australia.

There are also Aboriginal artifacts, many from the Pacific islands, South-East Asia and Africa, and a rare American Zuni Indian shield.

Inquiries, Estate Clearance Centre, 509 9087.

AUCTION NEXT WEEK

ANCE AUCTION